

Netflex

Zenworks Configuration Management

In de praktijk



Novellcongres.nl

13 mei 2009

De Reehorst Ede

OpenHorizons
Nederland

www.netflex.nl – info@netflex.nl

Welkom op Novellcongres.nl

- Mobiele telefoons uit aub
- In het Reehorst-gebouw niet roken
- De presentaties staan na vandaag op de website
- Heeft u een parkeermunt gekregen indien nodig?
- En vooral: Veel plezier vandaag

Tip: vul meteen na elke sessie de evaluatie in

Even voorstellen

- Kevin van Gool
- Stefan ten Hoeve



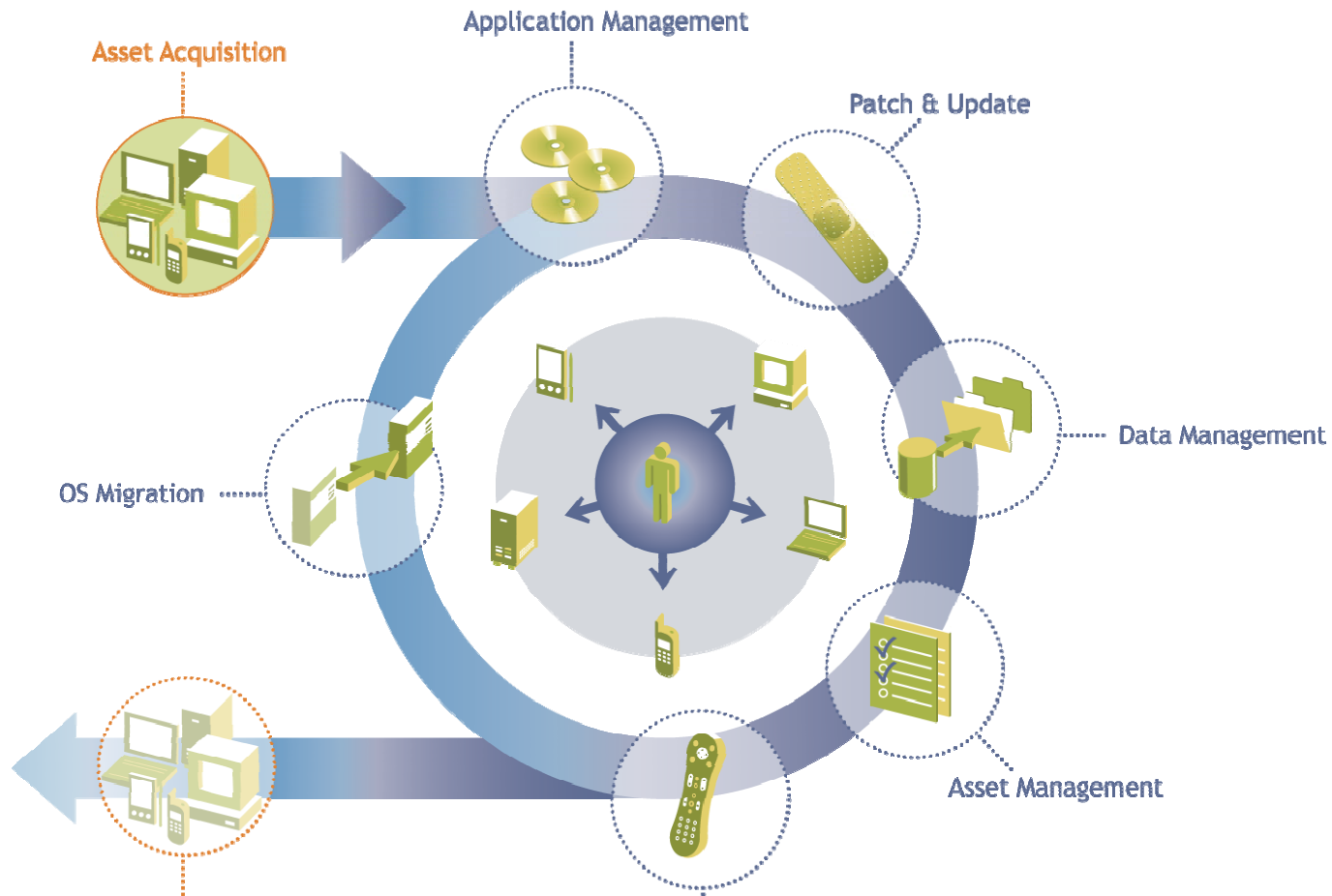
Agenda

- Overview
- ZCM omgeving
- ZENworks adaptive Agent
- Problemen oplossen en voorkomen
- ZCM 10 SP2
- Vragen en Antwoorden



Overview

Lifecycle Management



Overview ZCM

	Standard	Advanced	Enterprise
Windows desktop imaging	●	●	●
Application management	●	●	●
Application self-healing	●	●	●
IT asset discovery	●	●	●
IT asset inventory & classification	●	●	●
Remote control	●	●	●
Enterprise web reporting based on BusinessObject	●	●	●
Integrated ZENworks Patch Management*	○	●	●
Removable media device control	○	●	●
USB/Port control (eg. LAN, Bluetooth, Firewire)	○	●	●
Data encryption for internal & external devices	○	●	●
Wireless networking control	○	●	●
Personal firewall	○	○	●
Application control	○	○	●
Device integrity enforcement	○	○	●
Software License Management	○	○	●
Software Usage Tracking	○	○	●
Contract Management	○	○	●
Handheld device application management	○	○	●
Handheld device security management	○	○	●
Handheld device password sync with network security	○	○	●
Handheld device remote control	○	○	●
Linux systems management	○	○	●
Linux device patching and remediation	○	○	●
Linux device remote management	○	○	●



ZCM omgeving

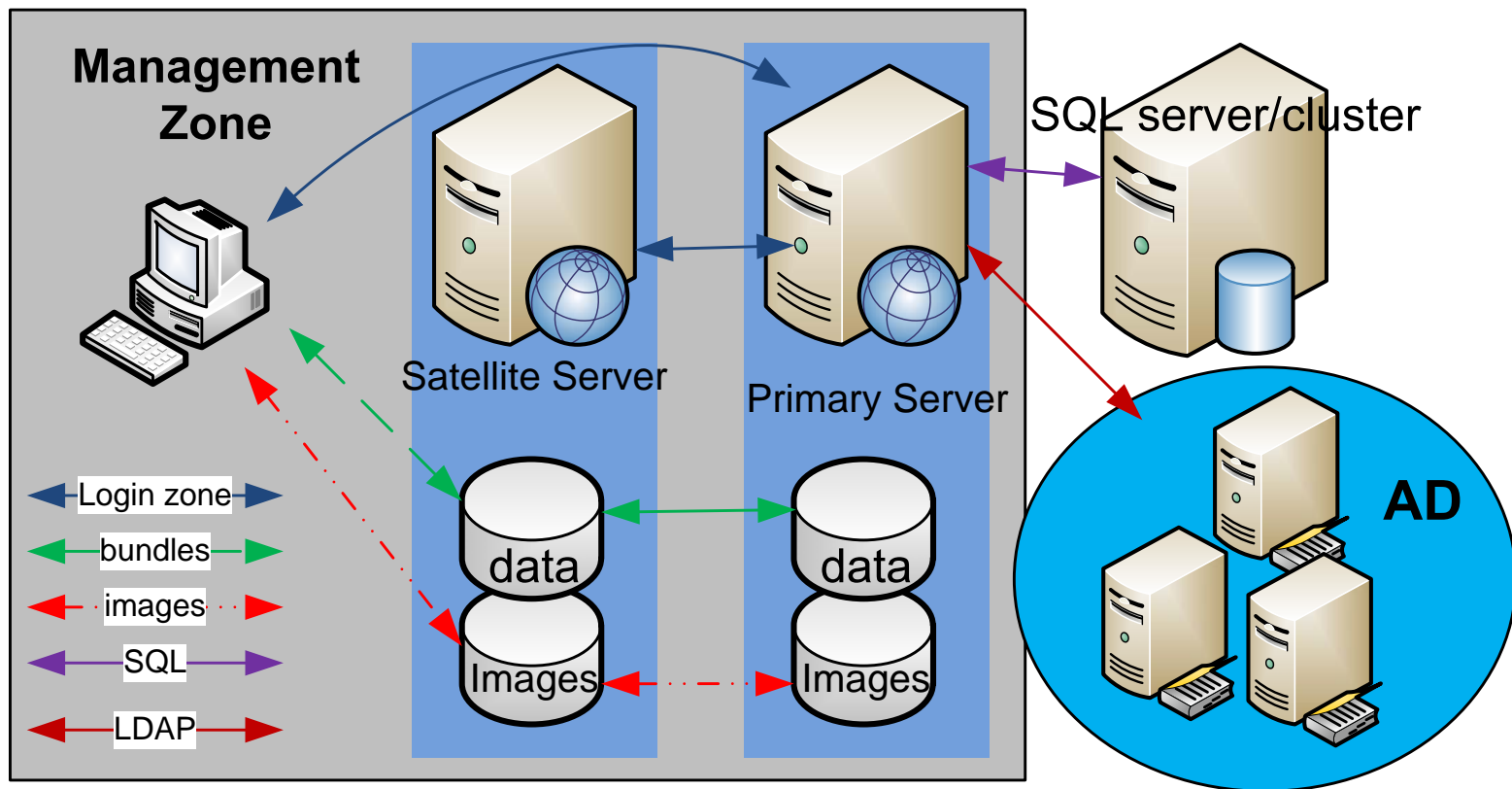
De ZCM omgeving

- Primary
- Satellite

De ZCM omgeving

Microsoft Distributed File System icm met File Replication Service als alternatief voor de ZCM satellite delivery methode binnen een Active Directory omgeving.

ZCM Productie omgeving

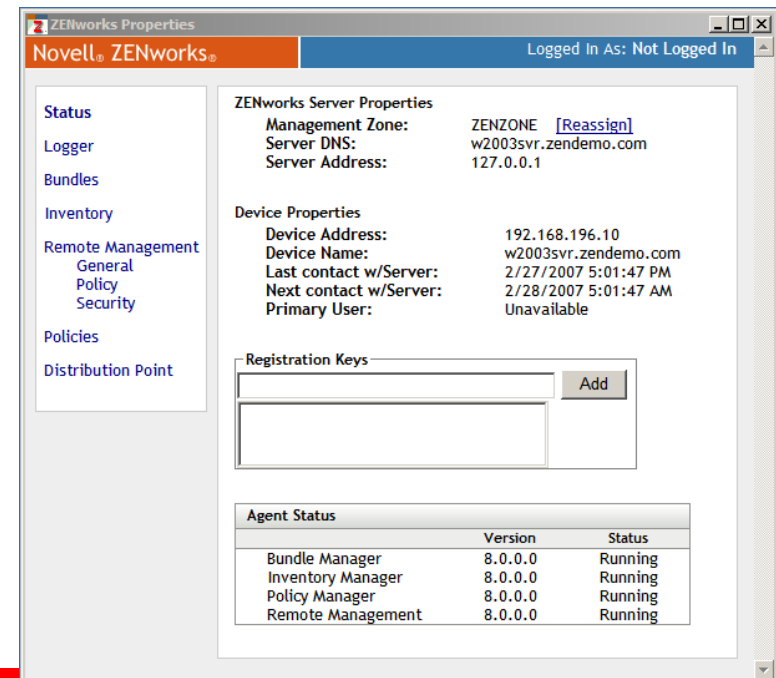




ZENworks® Adaptive Agent

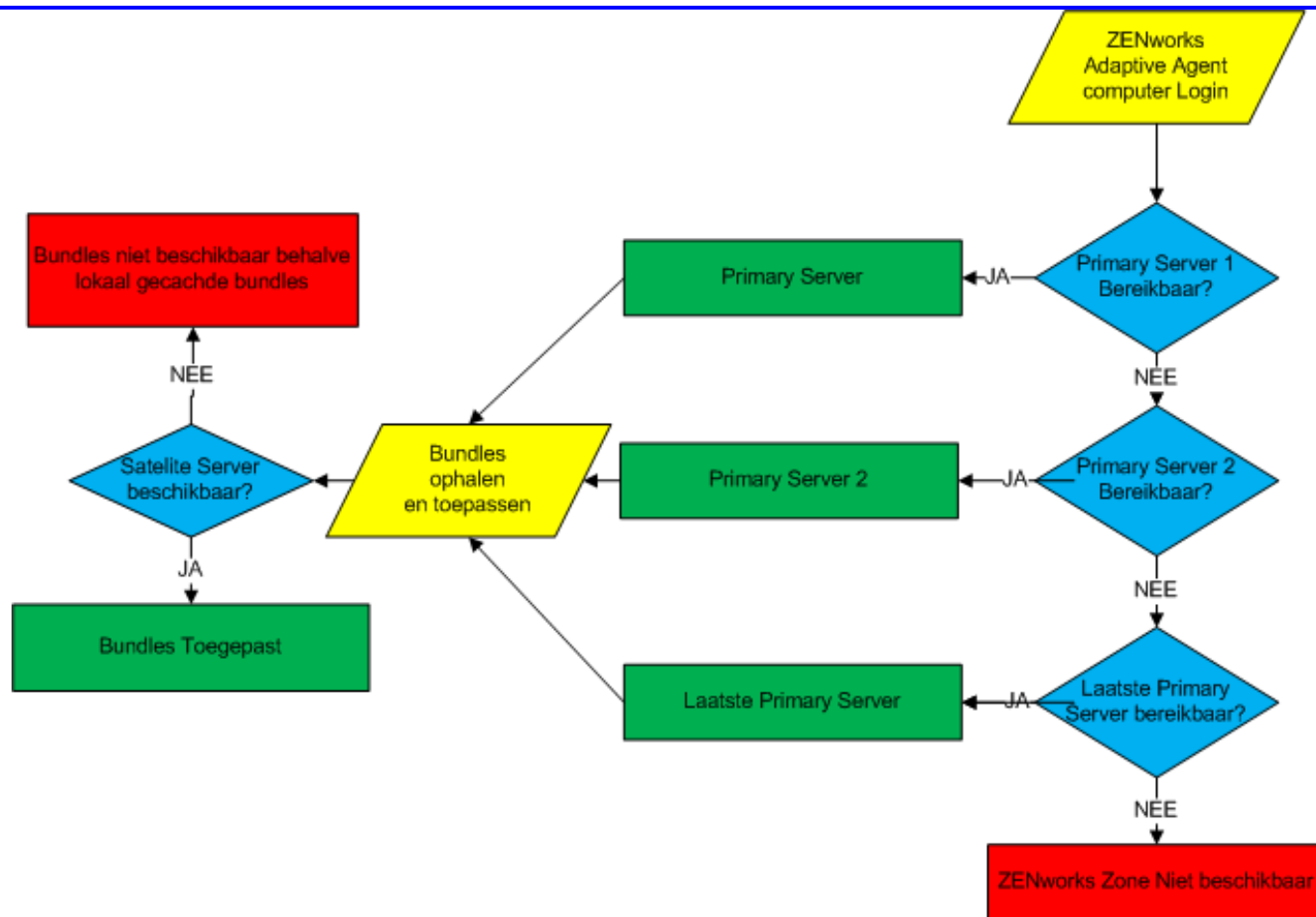
Zenworks Adaptive Agent

- New Internet friendly agent
 - ZENworks Adaptive Agent
 - > Single agent for all ZENworks family
 - > Automatically deploys required modules
 - > Self updating
 - > Checkpoint / restart
 - > Bandwidth throttling
 - ZENworks Properties
 - > Agent status
 - > Applications and policies
 - > Configuration
 - > Inventory
 - > Remote management

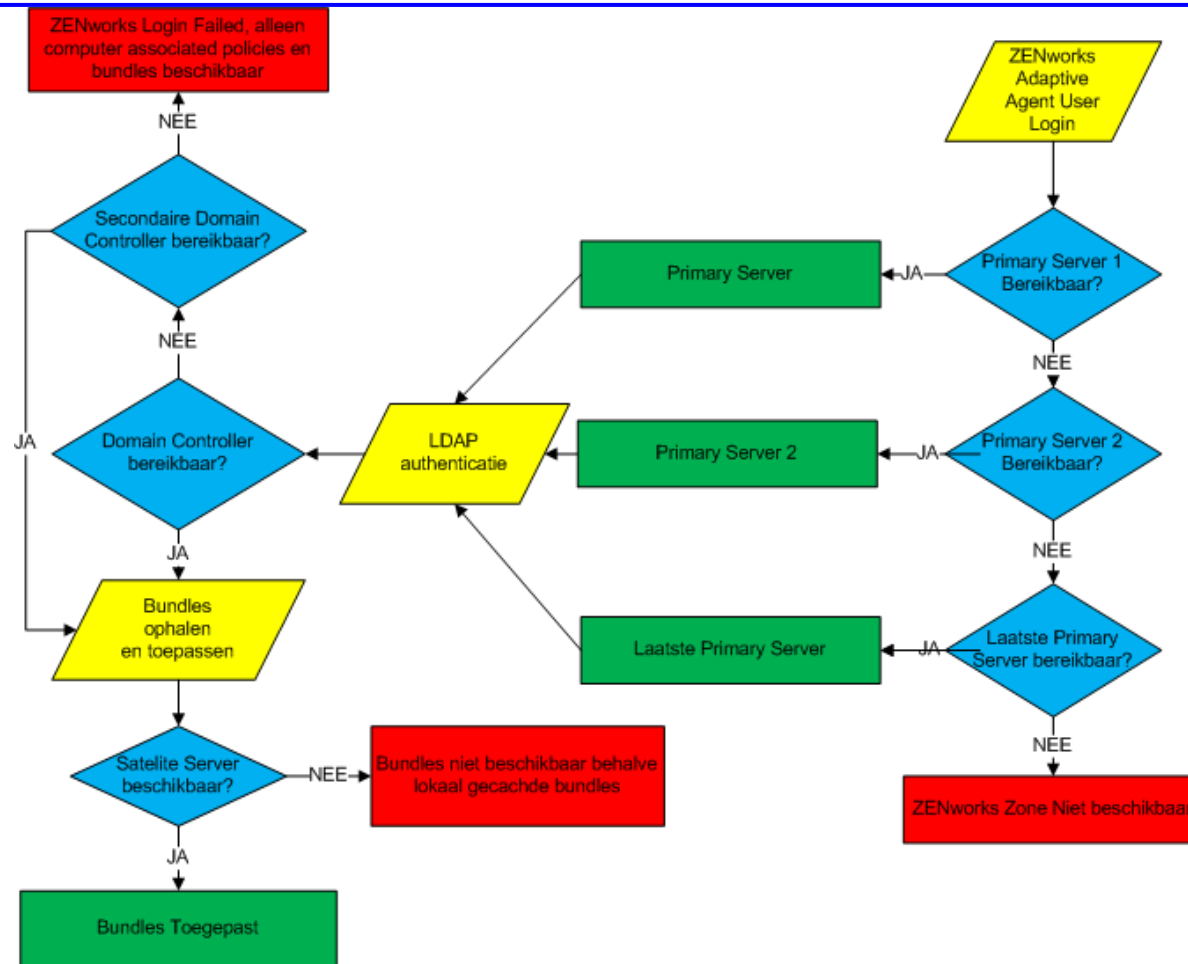


ZCM schema 1

Adaptive Agent PC login



ZCM schema 2: Adaptive Agent User login





Problemen oplossen & voorkomen

Verplicht voor een goed werking ZCM!

- CONFIGURE DNS BEFORE INSTALLING ZCM !!
- Fully qualified DNS record.
- ZCM server must use the same DNS record as the workstations
- The CN of the certificate must match the DNS record.

Group Policies Active Directory of ZENworks??

ZENworks

Voordelen: Management op 1 lokatie

Nadelen: nog steeds te traag

ActiveDirectory

Voordelen: Snel

Nadelen: Management werkstations
verdeeld.

Traagheid Novell Application Launcher (NAL)

Treedt op wanneer de gebruiker alleen user-rechten heeft.

Is te voorkomen door de gebruiker schrijfrechten te geven op:

`C:\Program Files\Novell\ZENworks\cache\zmd`

Meerdere LDAP servers.....

C:\Program Files\Novell\ZENworks\conf\datamodel\authsource\alt-servers.properties

Voorbeeld:

```
UserSource.ad.lan=\
  Ldap1.ad.lan:389 \
  Ldap2.ad.lan:389 \
  Ldap3.ad.lan:389
```

Satellite Servers & Closest server rules

- Ontlasten van WAN-verbindingen
- Lokale Satellite server als bron opgeven
- Satellite server kan zich maar aan 1 primary server verbinden
- Closest rules meer dan 1 primary server voor high availability

Bundle Groups

Applicaties & policies aan bundle groups koppelen
voor performance.

Welke Database(s)?

Database niet bereikbaar = **ZENworks**

SQL Cluster omgeving ?

Offline authenticatie & Offline Applicaties

- Algemene applicaties aan werkstations koppelen
- Applicaties zijn alleen beschikbaar indien ze aan de computer gekoppeld zijn.

Problemen met bundles

/zenworks/jsp/index.jsp?pageid=bundlelist&uid=/system/

The screenshot shows the Novell ZENworks web interface for managing bundles. The browser address bar shows the URL: https://127.0.0.1/zenworks/jsp/index.jsp?pageid=bundlelist&uid=/system/. The interface includes a navigation menu on the left with options like Home, Devices, Users, Policies, Bundles, Vulnerabilities, Deployment, Reports, Configuration, and Asset Management. The main content area displays a table of bundles with columns for Status, Name, Type, Category, Enabled, and Version. The table lists several folders such as Action Definitions, Bundle Definitions, Policy Definitions, Proxy, References, Sandbox, Sources, System Bundles, and System Update Ex. A search panel on the right allows filtering by Name, Type, Category, Message Status, and Compliance Status. The interface also includes a 'Logout administrator' link and a 'Help' button.

Status	Name	Type	Category	Enabled	Version
<input type="checkbox"/>	Action Definitions (Details)	Folder			
<input type="checkbox"/>	Bundle Definitions (Details)	Folder			
<input type="checkbox"/>	Policy Definitions (Details)	Folder			
<input type="checkbox"/>	Proxy (Details)	Folder			
<input type="checkbox"/>	References (Details)	Folder			
<input type="checkbox"/>	Sandbox (Details)	Folder			
<input type="checkbox"/>	Sources (Details)	Folder			
<input type="checkbox"/>	System Bundles (Details)	Folder			
<input type="checkbox"/>	System Update Ex (Details)	Folder			

ZENworks 10 SP2; What's New??

Linux Satellite servers

“PXE boot folder” replicatie

Extra informatie bij de uitrol van bundles.

Activeer / Deactiveer onderdelen.

En nog veel meer.....!!

En nu.....

Na deze sessie is er geen pauze

De keynote begint meteen hierna
in zaal Shouwburg

Vragen en Antwoorden

